

REVISIONS				
REV	DESCRIPTION	ECR	DRN BY	DATE
-	INITIAL RELEASE	XXX	JMR	1/10/25
				CHK XXX

NOTES:

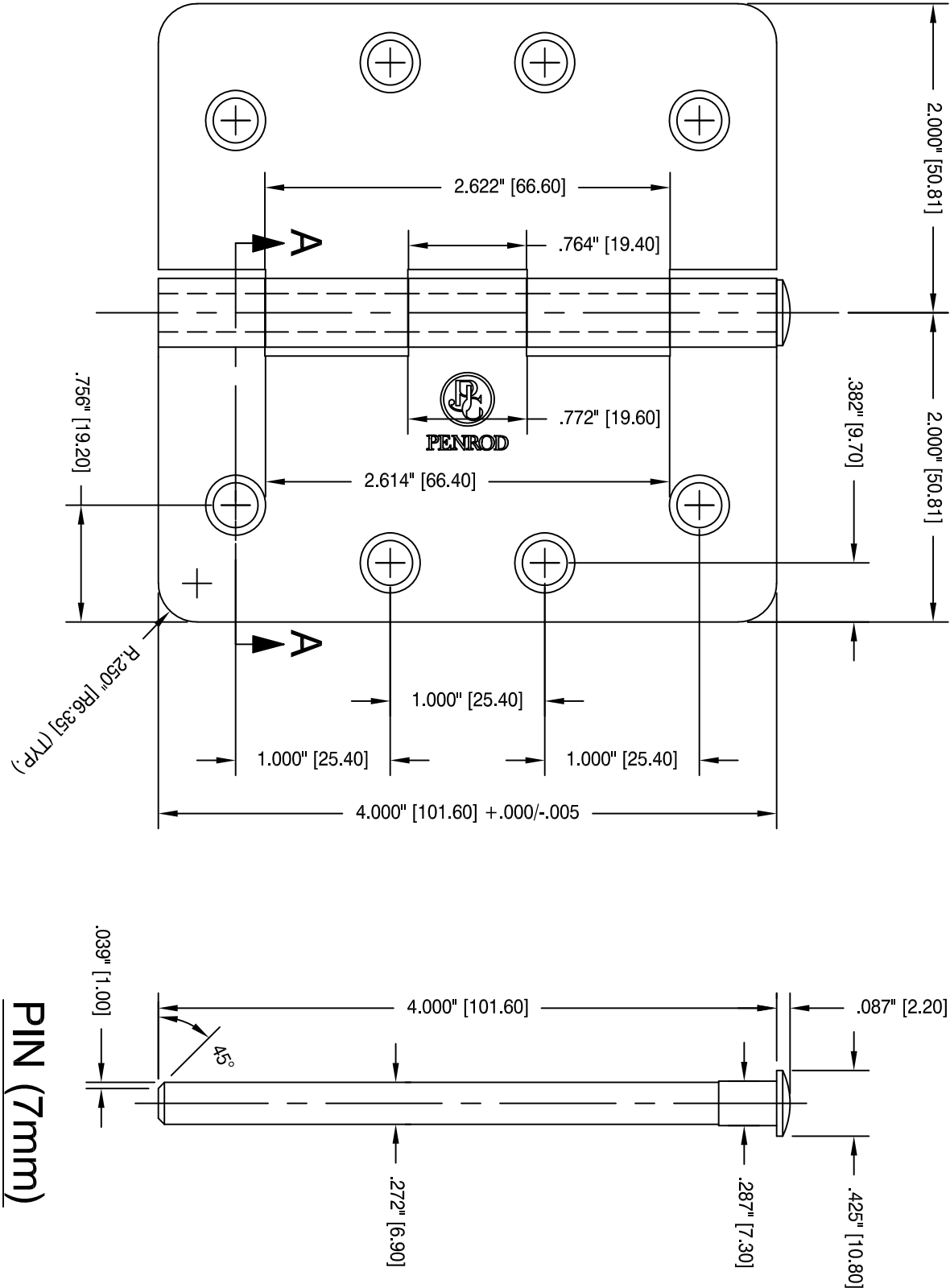
- HINGE COMPLIES WITH ANSI/BHMA A156.1.
- DIMENSION TOLERANCES ARE NOT ACCUMULATIVE.
- BRACKETED DIMENSIONS ARE IN MILLIMETERS.
- COUNTERSUNK FOR #9 SCREWS.

PACKAGING AVAILABLE:

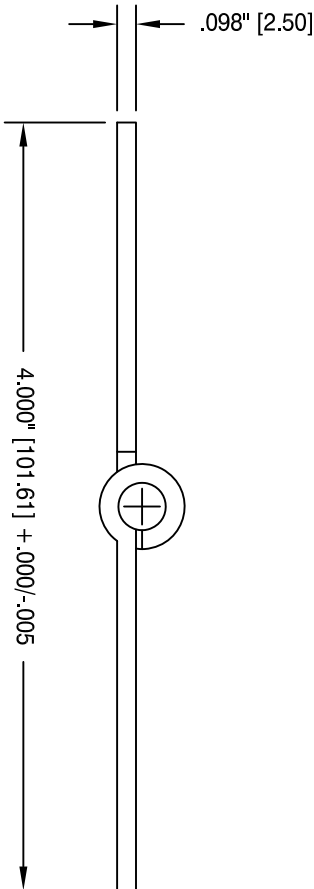
BULK, 96 PER MASTER. SCREWS PACKAGED SEPARATELY BOXED, 3 PIECES PER INNER W/ (24) #12 x 1/2" MACHINE SCREWS AND (24) #10x 1 1/4" WOOD SCREWS

ASSEMBLY:

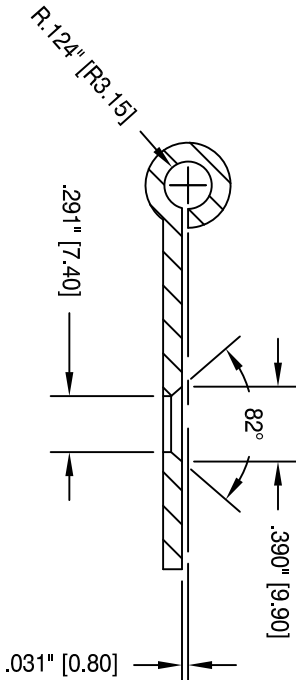
ASSEMBLED




PIN (7mm)



TOP VIEW - ASSEMBLED



SECTION A-A

		DRW: J. ROONEY	
CHK: YONG ZOU		APV: BRIAN POWERS	
theperiodcompany.com		NOTICE	
THE USE OF PROPRIETARY INFORMATION CONTAINED HEREON OR REPRODUCTION OF SAME SHALL BE UNDERSTOOD AND AGREED TO BE FOR THE CONVENIENCE OF REFERENCE ONLY. IT SHALL BE FURTHER AGREED THAT THE PATENT RIGHTS AND/OR IMPROVEMENTS CANNOT BE CONSTRUED AS TRANSFERRED OR CONVEYED UNLESS AGREED TO IN WRITING BY A DULY AUTHORIZED OFFICER OF THE PENROD COMPANY.		TITLE: 4.0" X 4.0" 1/4" RADIUS X 1/4" RADIUS ASSEMBLED BOXED	
TOLERANCES UNLESS OTHERWISE SPECIFIED		TIMELY PREP	
DECIMAL .XX = +/- .03 .XXX = +/- .005		REV -	
FRACTION +/- 1/64		SIZE INDEX NO. 1	
ANGLE +/- 1°		DWG NO. 4040036	
SCALE: FULL		DATE: 1-10-25	
		SHEET 1 OF 1	